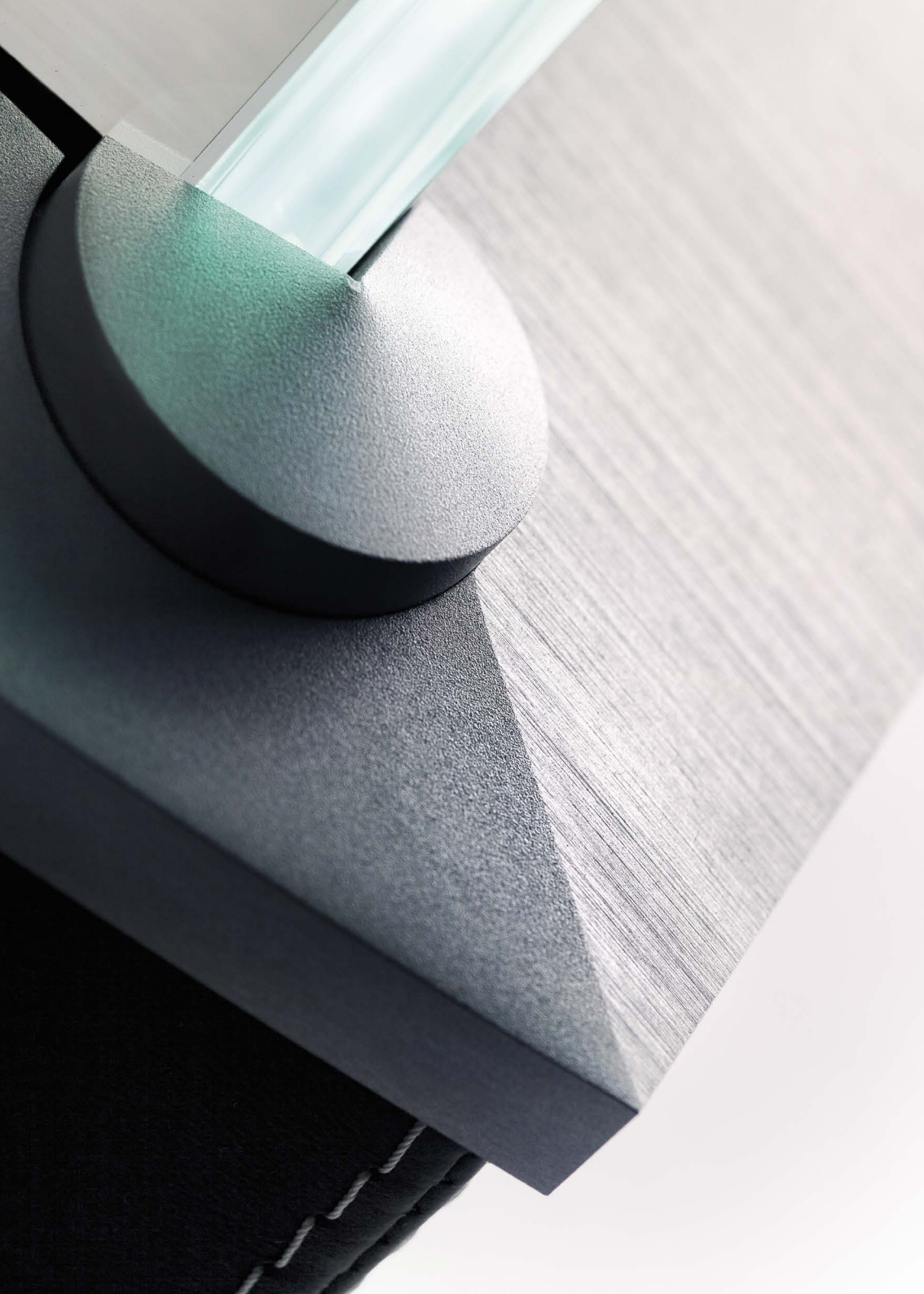




**WATERFALL AUDIO**  
SOUND DESIGNERS



MADE IN FRANCE



**GLASS**  
FLOORSTANDING SPEAKERS

page 4

**ON WALL**  
ON SHELF SPEAKERS

page 10

**IN WALL**  
SPEAKERS

page 16

**ACTIVE**  
SUBWOOFERS

page 20

**HOME CINEMA**  
LIVING ROOM

page 24

**HOME CINEMA**  
DEDICATED ROOM

page 28

# GLASS FLOORSTANDING SPEAKERS

Timeless and unique, a distinctive concept.  
an experience beyond comparison.



**Iguasçu Evo**

Pure refinement with its balanced proportions, Iguasçu Evo, is the most compact of our floorstanding speakers.

**Victoria Evo**

Emblematic of our range, Victoria Evo has pure and elegant lines, breathtaking sound in every style of music.

**Niagara**

Niagara is the showcase of more than 20 years of experience in acoustic research and glass cutting technologies.

For the past 20 years, Waterfall has transformed a loudspeaker into a rare work of art in the industry. Our glass speakers blend in your interior and bring this special distinctive touch. Their transparency allows them to fit into any style of decor with classic elegance. We use safety glass for our speakers.









*Iguasçu Evo - Niagara - Victoria Evo*



## TECHNICAL DETAILS

IGUASCU EVO

TYPE	2 way - 2 drivers + 1 passive radiator
RECOMMENDED AMPLIFIER *	40 - 150 Watts
PEAK POWER	300 Watts
IMPEDANCE (AVERAGE/MINI)	8 / 4 Ohms
EFFICIENCY (2.83V/1M)	88 dB
FREQUENCY RESPONSE (+/- 3 dB)	50 Hz - 28 kHz
ULTRA LOW FREQUENCY DRIVER	1 x 210 mm / 8" Atohm UFR210
BASS / MIDRANGE DRIVER	1 x 150 mm / 6" Atohm LD150
TWEETER	1 x 20 mm / 0,75" Atohm SD20
DIMENSIONS (width x depth x height in mm) (approx. inches)	250 x 250 x 870 / 9.84" x 9.84" x 34.25"
WEIGHT Kg (approx. lbs.)	14 kg / 30.8 lbs

VICTORIA EVO

TYPE	2 ½ way - 3 drivers + 1 passive radiator
RECOMMENDED AMPLIFIER *	40 - 250 Watts
PEAK POWER	400 Watts
IMPEDANCE (AVERAGE/MINI)	8 / 4 Ohms
EFFICIENCY (2.83V/1M)	89 dB
FREQUENCY RESPONSE (+/- 3 dB)	42 Hz - 28 kHz
ULTRA LOW FREQUENCY DRIVER	1 x 210 mm / 8" Atohm UFR210
BASS / MIDRANGE DRIVER	2 x 150 mm / 6" Atohm LD150
TWEETER	1 x 20 mm / 0,75" Atohm SD20
DIMENSIONS (width x depth x height in mm) (approx. inches)	250 x 250 x 1010 / 9.84" x 9.84" x 39.76"
WEIGHT Kg (approx. lbs.)	17 kg / 37.4 lbs

NIAGARA

TYPE	2 ½ way - 3 drivers + 1 passive radiator
RECOMMENDED AMPLIFIER *	60 - 300 Watts
PEAK POWER	500 Watts
IMPEDANCE (AVERAGE/MINI)	8 / 4 Ohms
EFFICIENCY (2.83V/1M)	89 dB
FREQUENCY RESPONSE (+/- 3 dB)	38 Hz - 28 kHz
ULTRA LOW FREQUENCY DRIVER	1 x 210 mm / 8" Atohm UFR210
BASS / MIDRANGE DRIVER	2 x 180 mm / 7" Atohm LD165EX
TWEETER	1 x Glass Horn Tweeter
DIMENSIONS (width x depth x height in mm) (approx. inches)	300 x 320 x 1200 / 11.81" x 12.6" x 47.24"
WEIGHT Kg (approx. lbs.)	40 kg / 88 lbs

\* Important note : the use of an amplifier beyond its limits, provokes clipping of the signal which might lead to destruction of the speaker (burnt voices coils), these damages are not covered by our warranty.

# ON WALL ON SHELF SPEAKERS

Luxury and minimalism. Compact and powerful.



**Sério**

Immerse yourself into your music with this Serio mini satellite.

Glass and aluminium in black or white with matching grill, wall bracket included.



**Hurricane Evo**

Compact and stylish, with harmonious shapes, Hurricane Evo is a totally versatile speaker.

Glass and aluminium in black or white with matching grill, wall bracket included.



**Elora Evo L/R**

Elegant and classy, Elora Evo LR is a real "must have" and one of a kind on the market.

Glass and aluminium, wall bracket included. Black or white optional grills available, compatible with Vesa 75 supports.



**Elora Evo Center**

To be used as a center speaker in our home cinema applications.

Glass and aluminium, wall bracket included. Black or white optional grills available, compatible with Vesa 75 supports.

## INNOVATIONS CONDENSED

These « on-wall » speakers deliver a remarkable pure sound with no comparison, in respect of their small thin size, thanks to the use of our patented Heatstream technology.

When coupled with one of our subwoofers you will be dazzled by their stereo or home cinema performance.









*Elora Evo - Hurricane Evo - Serio*

## TECHNICAL DETAILS

SERIO

TYPE	Full range - 1 driver, closed
RECOMMENDED AMPLIFIER *	30 - 80 Watts
PEAK POWER	150 Watts
IMPEDANCE (AVERAGE/MINI)	8 / 4 Ohms
EFFICIENCY (2.83V/1M)	87 dB
FREQUENCY RESPONSE (+/- 3 dB)	180 Hz - 20 kHz
FULL RANGE DRIVER	1 x 80 mm / 3" Atohm LD80
DIMENSIONS (width x depth x height in mm) (approx. inches)	125 x 80 x 125 / 4.92" x 3.15" x 4.92"
WEIGHT Kg / approx. lbs	1 kg / 2.2 lbs

HURRICANE EVO

TYPE	2 way - 2 drivers, closed
RECOMMENDED AMPLIFIER *	50 - 150 Watts
PEAK POWER	300 Watts
IMPEDANCE (AVERAGE/MINI)	8 / 4 Ohms
EFFICIENCY (2.83V/1M)	87 dB
FREQUENCY RESPONSE (+/- 3 dB)	120 Hz - 28 kHz
BASS / MIDRANGE DRIVER	1 x 100 mm / 4" Atohm LD100
TWEETER	1 x 20 mm / 0.75" Atohm SD20
DIMENSIONS (width x depth x height in mm) (approx. inches)	185 x 76.5 x 277 / 7.28" x 3" x 10.91"
WEIGHT Kg / approx. lbs	2,0 kg / 4.4 lbs

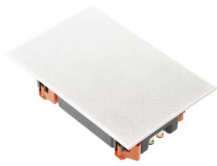
ELORA EVO CENTER & L/R

TYPE	2 ½ way - 3 drivers, closed
RECOMMENDED AMPLIFIER *	30 - 250 Watts
PEAK POWER	400 Watts
IMPEDANCE (AVERAGE/MINI)	8 / 4 Ohms
EFFICIENCY (2.83V/1M)	90 dB
FREQUENCY RESPONSE (+/- 3 dB)	120 Hz - 28 kHz
BASS / MIDRANGE DRIVER	2 x 100 mm / 4" Atohm LD100
TWEETER	1 x 20 mm / 0.75" Atohm SD20
DIMENSIONS (width x depth x height in mm) (approx. inches)	190 x 80 x 420 / 7.48" x 3.15" x 16.54"
WEIGHT Kg / approx. lbs	6 kg / 13.2 lbs

\* Important note : the use of an amplifier beyond its limits, provokes clipping of the signal which might lead to destruction of the speaker (burnt voices coils), these damages are not covered by our warranty.

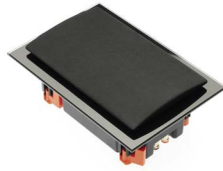
# HURRICANE IN WALL SPEAKERS

High-End integration.  
A versatile 3 in 1 solution to fit into your interior.



**Classic**

A classic flush mount white paintable grill featuring our Hurricane Evo speaker nested in a high tech back box to ensure perfect sound reproduction.



**Black Glass**

A unique version integrating an elegant black glass finish, featuring our Hurricane Evo speaker nested in a high tech back box to ensure perfect sound reproduction.



**White Glass**

A unique version integrating an elegant white glass finish, featuring our Hurricane Evo speaker nested in a high tech back box to ensure perfect sound reproduction.

## DELIVERING TRUE WATERFALL PURE SOUND

Unlike many inwall speakers which are open at the back, our speakers are delivered with a back box which guarantees optimal conditions for the driver. Designed around a low depth structure (73mm) incorporating our high tech back box made up of high density fiber ABS chassis, a true damping treatment with a special material, as well as an asphalt plate to provide complete inertia.







## TECHNICAL DETAILS

CLASSIC

TYPE	2 way - 2 drivers, closed
RECOMMENDED AMPLIFIER *	50 - 150 Watts
PEAK POWER	300 Watts
IMPEDANCE (AVERAGE/MINI)	8 / 4 Ohms
EFFICIENCY (2.83V/1M)	87 dB
FREQUENCY RESPONSE (+/- 3 dB)	90 Hz - 28 kHz
BASS / MIDRANGE DRIVER	1 x 100 mm / 4" Atohm LD100
TWEETER	1 x 20 mm / 0.75" Atohm SD20
DIMENSIONS (width x depth x height in mm) (approx. inches)	178 x 77 x 274 / 7" x 2.03" x 10.79"
WEIGHT Kg / approx lbs	2,5 kg / 5,5 lbs

BLACK GLASS

TYPE	2 way - 2 drivers, closed
RECOMMENDED AMPLIFIER *	50 - 150 Watts
PEAK POWER	300 Watts
IMPEDANCE (AVERAGE/MINI)	8 / 4 Ohms
EFFICIENCY (2.83V/1M)	87 dB
FREQUENCY RESPONSE (+/- 3 dB)	90 Hz - 28 kHz
BASS / MIDRANGE DRIVER	1 x 100 mm / 4" Atohm LD100
TWEETER	1 x 20 mm / 0.75" Atohm SD20
DIMENSIONS (width x depth x height in mm) (approx. inches)	185 x 101 x 277 / 7" x 4" x 10.79"
WEIGHT Kg / Approx lbs	3,0 kg / 6.6 lbs

WHITE GLASS

TYPE	2 way - 2 drivers, closed
RECOMMENDED AMPLIFIER *	50 - 150 Watts
PEAK POWER	300 Watts
IMPEDANCE (AVERAGE/MINI)	8 / 4 Ohms
EFFICIENCY (2.83V/1M)	87 dB
FREQUENCY RESPONSE (+/- 3 dB)	90 Hz - 28 kHz
BASS / MIDRANGE DRIVER	1 x 100 mm / 4" Atohm LD100
TWEETER	1 x 20 mm / 0.75" Atohm SD20
DIMENSIONS (width x depth x height in mm) (approx. inches)	185 x 101 x 277 / 7" x 4" x 10.79"
WEIGHT Kg / approx. lbs	3,0 kg / 6.6 lbs

\* Important note : the use of an amplifier beyond its limits, provokes clipping of the signal which might lead to destruction of the speaker (burnt voices coils), these damages are not covered by our warranty.

# ACTIVE SUBWOOFERS

Pure, deep and natural bass are the foundations of your music and films. Our subwoofers deliver dense and striking low frequencies with rare musical quality and extraordinary impact.



**HFM-200**

With its 18 cm driver this compact but powerful subwoofer reaches its optimal performances with Serio or Hurricane speakers in rooms under 30m<sup>2</sup>.

Available in black or white satin finish.



**HF2-250S**

With its 23 cm driver, elegant proportions and moderate size, this subwoofer is explosive, a wise choice to create compact hifi systems or home cinema with amazing sound quality.

Available in black or white satin finish.



**HF3-500S**

With its 2 x 23 cm drivers, the HF3-500S is particularly comfortable in large rooms. Very musical, it delivers exceptional infra low frequencies. No soundtrack will resist it.

Available in black or white satin finish.

Low frequency reproduction without distortion at high volume is a difficult task ! In such a compact space it is a real challenge, but with Atohm drivers capacities and optimized amplification we invite you to discover low frequency in a different way.





## TECHNICAL DETAILS

HF1-200

TYPE	Active - bass reflex
INTEGRATED AMPLIFIER	200 Watts / X-GUARD TECHNOLOGY *
PEAK POWER	250 Watts
FREQUENCY RESPONSE (+/- 3 dB)	40 Hz - 150 Hz
PHASE CONTROL	Switch 0° / 180°
CROSSOVER FREQUENCIES	Variable 40 Hz to 150 Hz or LFE mode
BASS DRIVER	1 x 180 mm / 7" ATOHM D180
DIMENSIONS (width x depth x height in mm) (approx. inches)	220 x 350 x 320 / 8.66" x 13.78" x 12.60"
WEIGHT Kg / approx. lbs	12 kg / 26.4 lbs

HF2-250S

TYPE	Active - bass reflex
INTEGRATED AMPLIFIER	250 Watts / X-GUARD TECHNOLOGY *
PEAK POWER	300 Watts
FREQUENCY RESPONSE (+/- 3 dB)	33 Hz - 150 Hz
PHASE CONTROL	Switch 0° / 180°
CROSSOVER FREQUENCIES	Variable 40 Hz to 150 Hz or LFE mode
BASS DRIVER	1 x 230 mm / 9" ATOHM LD230
DIMENSIONS (width x depth x height in mm) (approx. inches)	250 x 430 x 410 / 9.84" x 16.93" x 16.14"
WEIGHT Kg / approx. lbs	20 kg / 44 lbs

HF3-500S

TYPE	Active - bass reflex
INTEGRATED AMPLIFIER	500 Watts / X-GUARD TECHNOLOGY *
PEAK POWER	650 Watts
FREQUENCY RESPONSE (+/- 3 dB)	29 Hz - 150 Hz
PHASE CONTROL	Switch 0° / 180°
CROSSOVER FREQUENCIES	Variable 40 Hz to 150 Hz or LFE mode
BASS DRIVER	2 X 230 mm / 9" ATOHM LD230
DIMENSIONS (width x depth x height in mm) (approx. inches)	290 x 490 x 520 / 11.42" x 19.29" x 20.47"
WEIGHT Kg / approx. lbs	30 kg / 66 lbs

\* X-GUARD TECHNOLOGY guarantees the perfect match between the amplifier and the driver. It preserves phase integrity of the signal and maximal dynamic for pure deep and natural low frequencies.





# HOME CINEMA LIVING ROOM

—

## LIFESTYLE CINEMA IN YOUR LIVING ROOM

Multichannel sound brings a third dimension to the cinema experience. Discover five home cinema packs to fit your rooms and discover your music and films in a new way.

Our speakers are all matched sonically and our various packs are determined in function of your interior, to bring you a real cinematic and immersive surround sound exposure.

# HOME CINEMA LIVING ROOM



**Pack 1**

Minimalist, discreet and efficient, perfect for a small living room or bedroom.



**Pack 2**

Fill up your room with sound, not your floor space, also for a small living room or bedroom.



**Pack 3**

Compact with outstanding musical sound performance.



**Pack 4**

Luxury cinema solution for unequalled performance with style.



**Pack 5**

Ultimate solution : a new dimension and look for luxury home cinema or for pure hifi.

These packages offer depth, add light and shade, and spatialize everything seen on your cinema screen. Our speakers are pure and precise and when associated to our impactful subwoofers, you will find yourself submerged by new fantastic feelings. Never has home cinema been so captivating. Depending of your room size and other integration restraints, our diverse range of packs will bring the right solution to your needs.





# HOME CINEMA DEDICATED ROOM

—

## PRO CUSTOM SERIES

The « Professional Custom Series » range was initiated following the request from many customers to extend the Waterfall Experience in sound well into the private residential cinema rooms. This new "In wall" range proposes the Waterfall sound signature in XXL version.

These speakers are mainly designed to be installed behind a sonically transparent screen, LCR300, LCR500 and SUB600S have a remarkable small depth compared with other similar products on the market (less than 21cm / 8.26").

The SAT150 with only 9.9cm / 3.9" can easily be installed in partition walls or in ceiling, as surround or even used as front speaker in small rooms.

# HOME CINEMA DEDICATED ROOM

XXL SOUND / XXS THICKNESS  
Be prepared for breathtaking sound.



**SAT150**

With its mere 9.9 cm (3.89") depth, our SAT150 offers a great flexibility.



**LCR300**

Multipurpose sound and exceptional power for this compact speaker.



**LCR500**

Most powerful and detailed. Dedicated to large rooms.



**SUB600S**

Phenomenal power in the infra low frequencies and tight bass.

This collection is the answer to the most demanding movie buffs, it delivers great acoustic pressure with no distortion just like some of the best professional studio monitors. Power and precision for your private cinema room.

Three speaker models dedicated to various room sizes. One powerful subwoofer to be multiplied according to room size. Our Professional Custom Series collection brings a compact solution and allows you to **save space** by installing them "In wall" behind an acoustically transparent screen (only 21 cm depth).





  
**WATERFALL AUDIO**  
Professional Custom Series



## TECHNICAL DETAILS

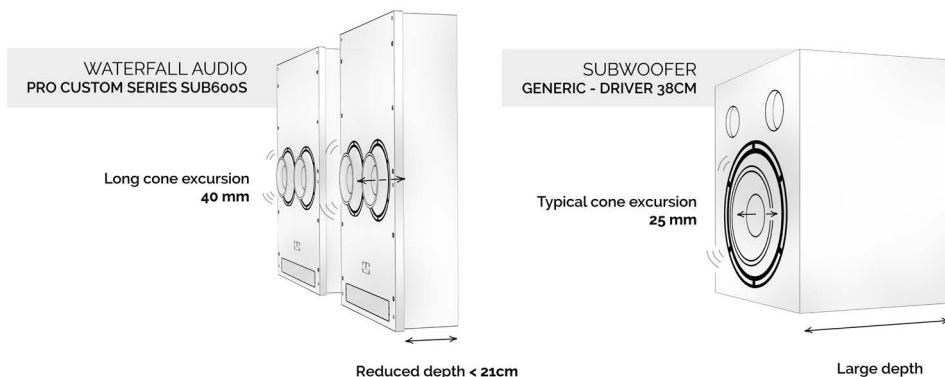
SAT150	<p>TYPE</p> <p>RECOMMENDED AMPLIFIER *</p> <p>PEAK POWER</p> <p>IMPEDANCE (AVERAGE/MINI)</p> <p>EFFICIENCY (2.83V/1M)</p> <p>FREQUENCY RESPONSE (+/- 3 dB)</p> <p>BASS / MIDRANGE DRIVER</p> <p>TWEETER</p> <p>DIMENSIONS (width x depth x height in mm) (approx. inches)</p> <p>WEIGHT Kg (approx. lbs.)</p>	<p>2 way - 2 drivers, closed</p> <p>80 - 150 Watts</p> <p>300 Watts</p> <p>8 / 4 Ohms</p> <p>88 dB</p> <p>80 Hz - 28 kHz</p> <p>1 x 150 mm / 6" Atohm LD150</p> <p>1 x 20mm / 0.75" Atohm SD20</p> <p>570 x 98 x 430 / 22.44" x 3.86" x 16.93"</p> <p>10 kg / 22 lbs</p>
LCR300	<p>TYPE</p> <p>RECOMMENDED AMPLIFIER *</p> <p>PEAK POWER</p> <p>IMPEDANCE (AVERAGE/MINI)</p> <p>EFFICIENCY (2.83V/1M)</p> <p>FREQUENCY RESPONSE (+/- 3 dB)</p> <p>BASS DRIVER</p> <p>MIDRANGE DRIVER</p> <p>TWEETER</p> <p>DIMENSIONS (width x depth x height in mm) (approx. inches)</p> <p>WEIGHT Kg (approx. lbs.)</p>	<p>3 way - 4 drivers, closed</p> <p>100 - 300 Watts</p> <p>500 Watts</p> <p>8 / 4 Ohms</p> <p>91 dB</p> <p>80 Hz - 28 kHz</p> <p>2 x 150 mm / 6" Atohm LD150</p> <p>1 x 150 mm / 6" Atohm LD150</p> <p>1 x 20mm / 0.75" Atohm SD20</p> <p>570 x 204 x 430 / 22.44" x 8.03" x 16.93"</p> <p>17 kg / 37.4 lbs</p>
LCR500	<p>TYPE</p> <p>RECOMMENDED AMPLIFIER *</p> <p>PEAK POWER</p> <p>IMPEDANCE (AVERAGE/MINI)</p> <p>EFFICIENCY (2.83V/1M)</p> <p>FREQUENCY RESPONSE (+/- 3 dB)</p> <p>BASS DRIVER</p> <p>MIDRANGE DRIVER</p> <p>TWEETER</p> <p>DIMENSIONS (width x depth x height in mm) (approx. inches)</p> <p>WEIGHT Kg (approx. lbs.)</p>	<p>3 way - 4 drivers, bass-reflex</p> <p>150 - 500 Watts</p> <p>750 Watts</p> <p>8 / 4 Ohms</p> <p>92 dB</p> <p>60 Hz - 28 kHz</p> <p>2 x 180mm / 7" Atohm LD180</p> <p>1 x 150mm / 6" Atohm LD150</p> <p>1 x 28mm / 1.1" Atohm SD28</p> <p>570 x 197 x 751 / 22.44" x 7.76" x 29.57"</p> <p>31 kg / 68 lbs</p>

\* Important note : the use of an amplifier beyond its limits, provokes clipping of the signal which might lead to destruction of the speaker (burnt voices coils), these damages are not covered by our warranty.

# SUB600S

## KEYSTONE OF OUR SYSTEM

Phenomenal power in the infra low frequencies. SUB600S delivers thundering impact with extraordinary musical qualities. It will awaken your senses in a way that you have never experienced before.



### KEY ADVANTAGES OF USING 4 X LONG EXCURSION DRIVER INSTEAD OF 1 X 38CM

1. 4 drivers provide more air displacement :  
Comparison of air movement capacity ( $\pi \times r^2 \times h$  in  $cm^3$ ) of :  
 $4 \times 23 \text{ cm } (r=11.5\text{cm}/4.0 \text{ cm cone excursion}) > 1 \times 38 \text{ cm } (r=19\text{cm}/2.5\text{cm cone excursion})$   
 $4 \times \pi \times 11.5^2 \times 4.0 = \mathbf{6\ 647 \text{ cm}^3} > 1 \times \pi \times 19^2 \times 2.5 = \mathbf{2\ 835 \text{ cm}^3}$
2. Each moving part (cone + voice coil) weighs 75g instead of 250g for a 38 cm : less inertia provides better impulse response with clear bass at low and high levels.
3. 4 overpowerful driver magnets delivering incredible fast and furious bass.
4. 4 voice coils providing better heat dissipation and power handling.



## TECHNICAL DETAILS

SUB600S

TYPE	2 drivers - bass reflex
RECOMMENDED AMPLIFIER *	400 - 600 Watts
PEAK POWER	800 Watts
IMPEDANCE (AVERAGE/MINI)	8 / 4 Ohms
EFFICIENCY (2.83V/1M)	90 dB
FREQUENCY RESPONSE (+/- 3 dB)	29 Hz - 150 Hz
BASS DRIVER	2 x 230 mm / 9" Atohm LD230EX
DIMENSIONS (width x depth x height in mm) (approx. inches)	570 x 197 x 875 / 22.44" x 7.76" x 34.45"
WEIGHT Kg (approx. lbs.)	34 kg / 75 lbs

\* Important note : the use of an amplifier beyond its limits, provokes clipping of the signal which might lead to destruction of the speaker (burnt voices coils), these damages are not covered by our warranty.

PROPRIETARY TECHNOLOGIES  
ADT : ACOUSTIC DAMPING TUBE



*Applied to floorstanding speakers :*  
**Iguasçu Evo, Niagara & Victoria Evo**

**Glass brings one technical advantage & one challenge.**

The ideal speaker enclosure should be as rigid & inert as possible. A glass enclosure is close to that and more inert than a wooden structure, so there will be no vibration from it.

The challenge is how to damp the energy inside the box. The patented **"Acoustic Damping Tube"**, located at the back of the driver, is the answer. It controls the driver in a reflective structure such as a glass enclosure.



THE ADT IS LOCATED AT THE REAR OF THE MID-BASS DRIVER  
THIS TECHNOLOGY HAS 3 MAIN FUNCTIONS :

Limits the return of the back wave on the cone.

Damping control of the medium high frequencies with the integrated damping chamber.

Mechanical uncoupling of the mid bass driver and the glass structure.

# PROPRIETARY TECHNOLOGIES

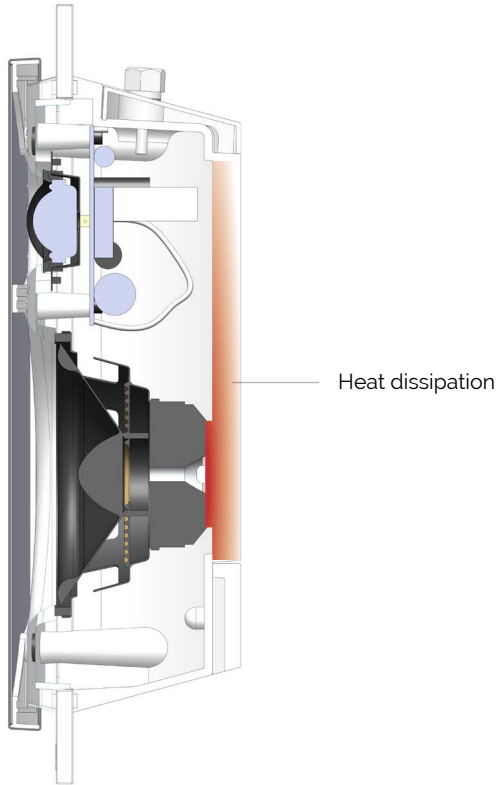
## HEATSTREAM TECHNOLOGY\*



*Applied to on-wall speakers :*  
**Elora Evo, Hurricane Evo & Serio**

During long listening periods at high sonic levels, the drivers receive a lot of power and the voice coil tends to heat up considerably causing the driver to lose some of its efficiency and some electrical parameters are also modified.

Traditionally only the magnet is dissipating that excess heat on its own, but in compact speakers the magnets are reduced in size and therefore have a limited capacity to cool down on their own, leading to overheating and distortion.



The purpose of this patented technology is to limit these effects and to provide an exceptionally high power handling by coupling the driver magnet to the aluminium cabinet. Excess heat is dissipated from the voice coil; the speaker enclosure becomes a heat dissipater.

With Heatstream technology, we reach unprecedented power handling levels and sonic characteristics, previously unheard of in such a compact design.

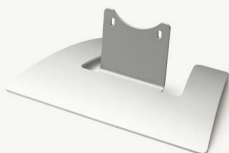
# OPTIONAL ACCESSORIES

## ON SHELF SPEAKERS



### Elora Evo grill

Magnetic  
Black or white



### Elora Evo shelf stand

Aluminium  
Compatible L/R and Center



### Hurricane Evo shelf stand

Metal  
Black or white



### Hurricane Evo wall bracket

For horizontal position



### Audio cable

100m roll, 2 mm<sup>2</sup>





For further information,  
please contact your nearest dealer or  
distributor or visit our internet site :

[www.waterfallaudio.com](http://www.waterfallaudio.com)



All drivers are developed and manufactured by Atohm (France)

**Création graphique :** Studio614

**Photographies :** Sébastien Veraguas - VSI (Cinema Room)  
Art Cinema (Serio - Poland) - Chris B Design (Serio)

## **WATERFALL AUDIO**

Z.A. Les Praderies - 83570 CARCÈS  
FRANCE

+33 (0)4 98 05 11 30  
[export@waterfallaudio.com](mailto:export@waterfallaudio.com)